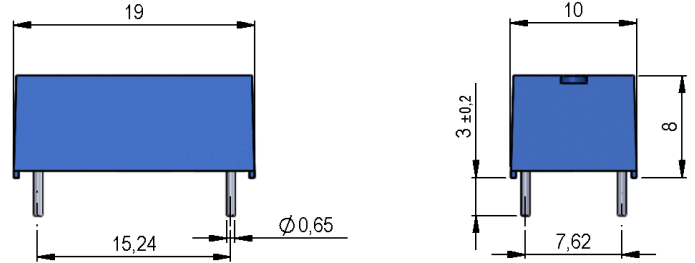


525 Series Optocouplers



- Features: ATEX Optocoupler for Intrinsically Safe Circuits
- Applications: Electronics for Mining, Test & Measurement, Automation Technology
- Markets: Oil & Gas Production, Refinery, Mining, Medical, Test and Measurement, and others

Part Description: **525-03-0-i**

| Customer Options | | Unit |
|---|------------------|------|
| Coupler Characteristics | | |
| Isolation Voltage Input / Output (min.) | 4,000 | VDC |
| Current Transfer Ratio (min.) I _c /I _f CTR (I _f = 10mA) | 0.5 | |
| Turn On Time (typ.) T _{on} | 5.5 | µsec |
| Turn-Off Time (typ.) T _{off} | 4.2 | µsec |
| Collector-Emitter Voltage (max.) | 32 | VDC |
| Collector Current I _c (max.) | 50 | mA |
| Creeping Distance (min.) | 14.5 | mm |
| Air Path Input / Output (min.) | 14.5 | mm |
| Insulation Distance Emitter-Detecto (min.) | 5 | mm |
| Insulation Resistance Input / Output (min.) | 10 ¹² | Ohm |
| Transmission Frequencies (typ.) | 50 | kHz |

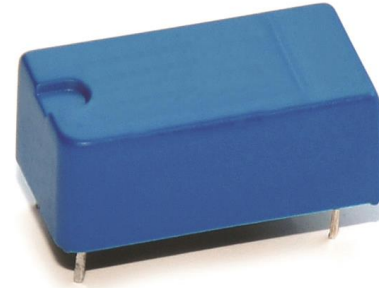
| Housing and Material Specifications | |
|-------------------------------------|----------------|
| Housing Material | Plastic |
| Case Color | Blue |
| Sealing Compound | Polyurethan |
| Connection Pins | Cu-Ally Tinned |
| Washability | Fully Sealed |

| Environmental Data | | Unit |
|--|------------|------|
| Shock Resistance (max.) 1/2 sine wave duration 11ms | 50 | g |
| Vibration Resistance (max.) | 20 | g |
| Operating Temperature | -40 to 85 | °C |
| Storage Temperature | -40 to 100 | °C |
| Soldering Temperature (max.) 5 sec. max. | 260 | °C |

Handling Instructions

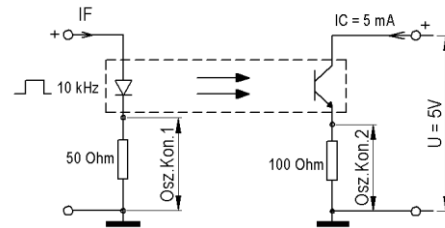
- It is advised that normal static precautions be taken in handling and assembly of this component to prevent damage and/or degradation which may be induced by ESC.

525 Optocoupler



Test Circuit and Layout

Test Circuit



Layout

